

TITANIUM

The TITANIUM 85, 125 and 165 are high-end, compact, high productivity conventional and thermal plate processors. They have been designed and built to meet the requirements of even the most demanding pre-press environment.

FEATURES INCLUDE:

- ◀ PLC control system with I/O PCB
- ◀ Full colour LCD touchscreen display with multi language options
- ◀ Small, compact footprint
- ◀ Fully adjustable developer guide plates
- ◀ Highly efficient drying system
- ◀ Large bore/high flow waste drainage system

TITANIUM can be configured for on-line or off-line use using the extensive range of optional platesetter interfaces or infeed and exit tables.

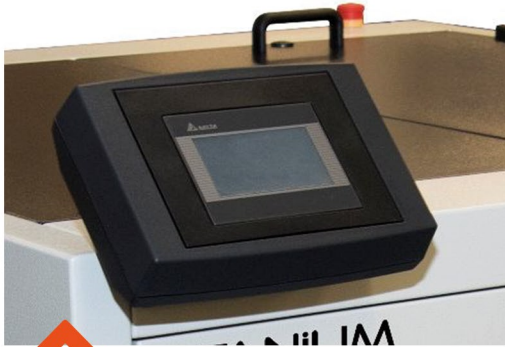
Other options include: second developer brush; conductivity probe; water recirculation; gum flush; bottle sensors; developer flow switch; plate re-entry; drip tray; lower side plumbing/bottle cover; wash down hose; remote access system; warning beacon; preventative maintenance kits.

TITANIUM is suitable for use with most conventional, UV (CTcP) and thermal lithographic plates.

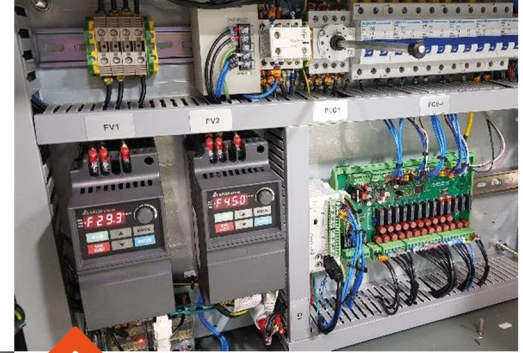




TITANIUM : FEATURES

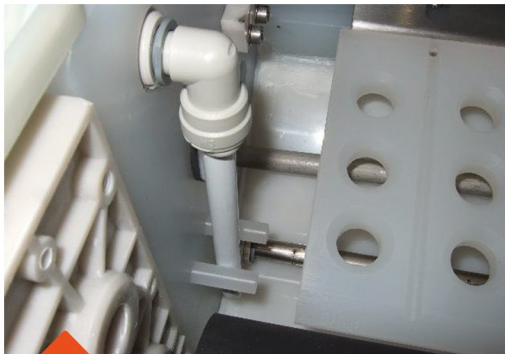


Fully adjustable developer plate guides. Ensures perfect plate alignment into and through the developer section reducing any potential for bow waves.



Full colour LCD Touchscreen HMI Display provides access to all control functions and displays all processing parameters.

PLC control system I/O PCB, inverter conveyor/drive and brush motor control.



Easy access to all major components including pumps and motors via quick release and removable covers.



Direct-to-tank replenisher system ensures consistent developer activity.

Heavy duty chain drive system with AC drive and brush motors. Idlers fitted with sealed ball race bearings for maintenance free operation.





TECHNICAL CHARACTERISTICS

MAIN CHARACTERISTICS:

- ◀ PLC control system with I/O PCB and intuitive touchscreen display with multi-language options.
- ◀ Development by immersion and single rotating brush roller with facility for second (optional) brush.
- ◀ Adjustable developer temperature from 15 to 34°C.
- ◀ Developer constantly circulated via filter and two immersed spray bars to ensure uniformity of temperature and conductivity.
- ◀ Integrated developer cooling system - chiller and water cooled coil in tank.
- ◀ Developer cover to minimise oxidation.
- ◀ Developer bulk fill pump.
- ◀ Automatic m² and anti-ox (hourly and sleep) developer replenishment.
- ◀ Adjustable transport roller speed (dip time) from 662 to 2192 mm/minute (13-43 seconds).
- ◀ Adjustable roller speed from 10 to 150 RPM.
- ◀ Rotating brush roller in rinse.
- ◀ Manual flow control valves on rinse and gum spray bars.
- ◀ Fully adjustable dryer output power from 0 to 100%.
- ◀ 7-day start/stop timer function.
- ◀ Programmable jog/auto run function.
- ◀ Plate jam detection.
- ◀ Developer, developer filter and gum change alarm and usage displays.
- ◀ Roller assemblies easily removed without tools.
- ◀ All tank components, including spray bars, guides etc., easily removed for cleaning and servicing.
- ◀ Pumps and motors easily accessible for servicing.
- ◀ Heavy duty chain drive system with AC motors.

BOTTLE SENSORS - OPTION

The TITANIUM can be fitted with optional bottle sensors for the developer replen and developer overflow containers. The sensors generate a 'Check Bottles' error when either the developer replen bottle is empty, or the developer overflow bottle is full.



WATER SAVING SYSTEM - OPTION

The TITANIUM can be fitted with an optional Internal Water Recirculation System (IWR) which reduces water usage and waste by up to 90%. The rinse tank holds a volume of water which is then re-circulated and filtered via upper and lower spray bars in the tank. The tank is replenished every m² of plate processed via a mains water supply and solenoid valve. Only a minimal amount of water is used/wasted per plate compared to the Direct-to-Drain method.



TITANIUM : SPECIFICATIONS

	85	125	165
MAXIMUM PLATE WIDTH	850mm (33.4")	1250mm (49.2")	1650mm (64.9")
MINIMUM PLATE LENGTH	300mm (11.8")	300mm (11.8")	300mm (11.8")
PLATE THICKNESS	0.15 - 0.40 mm (0.006 - 0.016")	0.15 - 0.40 mm (0.006 - 0.016")	0.15 - 0.40 mm (0.006 - 0.016")
PROCESSING SPEED	662 - 2192 mm/min (26.06 - 86.30"/min) 13 - 43 seconds dip-to-nip	662 - 2192 mm/min (26.06 - 86.30"/min) 13 - 43 seconds dip-to-nip	662 - 2192 mm/min (26.06 - 86.30"/min) 13 - 43 seconds dip-to-nip
DEVELOPER TANK CAPACITY	48 litres (12.68 US gal.)	70 litres (18.49 US gal.)	106 litres (28.00 US gal.)
RINSE TANK CAPACITY	31 litres (8.19 US gal.)	44 litres (11.62 US gal.)	64 litres (16.91 US gal.)
GUM/FINISHER TANK CAPACITY	3.5 litres (0.92 US gal.)	5.3 litres (1.40 US gal.)	4.5 litres (1.19 US gal.)
MACHINE DIMENSIONS (L x W x H) exc. Control Pod	1265 x 1426 x 1115-1185 mm (49.8 x 56.1 x 43.9-46.7")	1265 x 1840 x 1115-1185 mm (49.8 x 72.4 x 43.9-46.7")	1519 x 2270 x 1115-1185 mm (59.8 x 89.4 x 43.9-46.7")
PLATE INPUT HEIGHT	920 - 990 mm (36.2 - 39.0")	920 - 990 mm (36.2 - 39.0")	910 - 980 mm (35.8 - 38.6")
PLATE EXIT HEIGHT	910 - 980 mm (35.8 - 38.6")	910 - 980 mm (35.8 - 38.6")	935 - 1005 mm (36.8 - 39.6")
MACHINE NET WEIGHT	560 Kg (1232 lbs)	600 Kg (1320 lbs)	750 Kg (1650 lbs)
ELECTRICAL SUPPLY/RATING	3Ph+N+PE/GND (4W+GND) 400V AC, 50/60-Hz, 14A 3Ph+PE/GND (3W+GND), 200-230V AC, 50/6-Hz, 18A 1Ph+N+PE/GND (2W+GND) 200-230V AC, 50/60Hz, 22A	3Ph+N+PE/GND (4W+GND) 400V AC, 50/60-Hz, 14A 3Ph+PE/GND (3W+GND), 200-230V AC, 50/6-Hz, 18A 1Ph+N+PE/GND (2W+GND) 200-230V AC, 50/60Hz, 22A	3Ph+N+PE/GND (4W+GND) 400V AC, 50/60-Hz, 14A 3Ph+PE/GND (3W+GND), 200-230V AC, 50/6-Hz, 22A 1Ph+N+PE/GND (2W+GND) 200-230V AC, 50/60Hz, 26A
WATER SUPPLY CONNECTION	3-5 bar (43.5-72.5 psi) 3/4" BSPM	3-5 bar (43.5-72.5 psi) 3/4" BSPM	3-5 bar (43.5-72.5 psi) 3/4" BSPM
WASTE CONNECTION	32mm compression elbow 1-1/2" BSPM	32mm compression elbow 1-1/2" BSPM	32mm compression elbow 1-1/2" BSPM
NOISE LEVEL	<60 dB	<60 dB	<60 dB
ROOM TEMPERATURE	18-29°C (64.4-84.2°F)	18-29°C (64.4-84.2°F)	18-29°C (64.4-84.2°F)
ROOM HUMIDITY	20-70% non-condensing	20-70% non-condensing	20-70% non-condensing
APPROVALS	Complies to CE, UL standards & RoHS directive / cETLus listed	Complies to CE, UL standards & RoHS directive / cETLus listed	Complies to CE, UL standards & RoHS directive / cETLus listed

HEIGHTS (UK) LIMITED has a policy of continual improvement for all its products and reserves the right to change specifications and functionality without notice.



HEIGHTS (UK) LIMITED
Wainstalls Mill, Wainstalls
Halifax, West Yorkshire
HX2 7TJ
United Kingdom

HEIGHTS USA INC.
1445 Lower Ferry Road, Ewing
Trenton, New Jersey, USA
Phone: +1 609 530 1300
info@heights-usa.com
www.heights-usa.com

Sales Desk:
+44 (0)1422 240914